



Distributed by:



Effective

Below Ground

Waterproofing



## The Importance of Below Ground Waterproofing

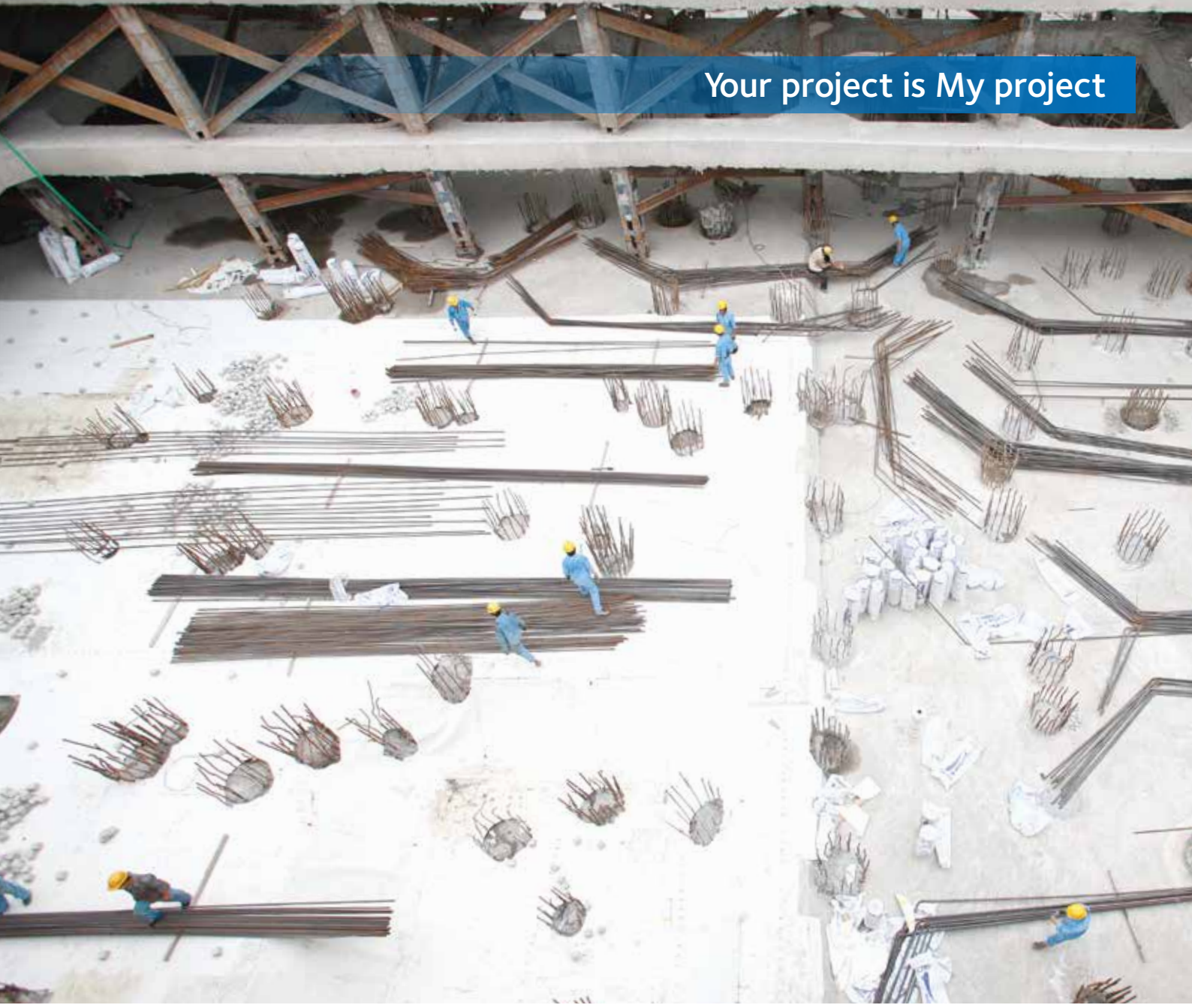
Successful waterproofing for any structure built on ground or below ground is essential as it is very difficult and costly to do something about leaks later. The problems associated with failures in below ground or basement waterproofing are even more serious, as these are difficult to reach areas for repairs. Costly and complicated problems can arise from soil conditions, water tables, ground water conditions and environmental changes, improperly cured concrete, improperly designed foundations, poor workmanship, and so on.



A truly effective waterproofing solution requires not only a permanent and fully bonded waterproofing membrane system but protection for joints and connections where a majority of leaks occur.



Your project is My project

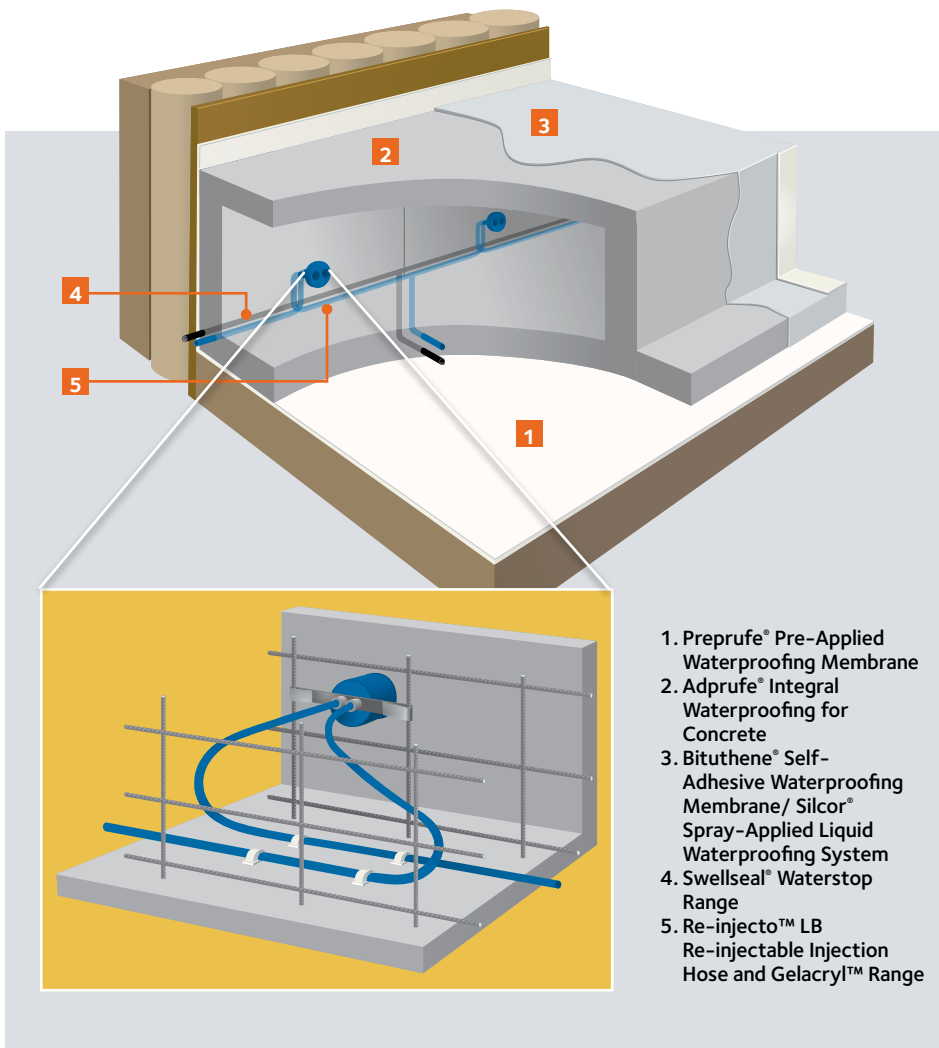




# GCP's Building Envelope Systems for Below Ground Waterproofing

To prevent the migration of water – that is water tracking between the waterproofing and structure – waterproofing must bond to the structural elements. Depending on project requirements and site conditions, waterproofing can be pre-applied, post-applied or integral.

In addition, adequate waterproofing protection must be provided for protrusions and joints. The majority of leaks occur at 1 percent of the building's exterior, at its terminations and transition detailing, such as joints, structural connections, and cracks in concrete. That is why proper planning and the specification of the appropriate waterproofing system at the beginning of a project are important.



## A Comprehensive Range of Joint Protection Products

GCP's range of joint protection products has been proven in numerous projects all over the world with over 40 years experience and track record. Its waterproofing products can be used during new construction and include bentonite strips, hydrophilic mastics and rubbers, injection hoses and cementitious coatings for basement waterproofing.

### Swellseal® Waterstop Range

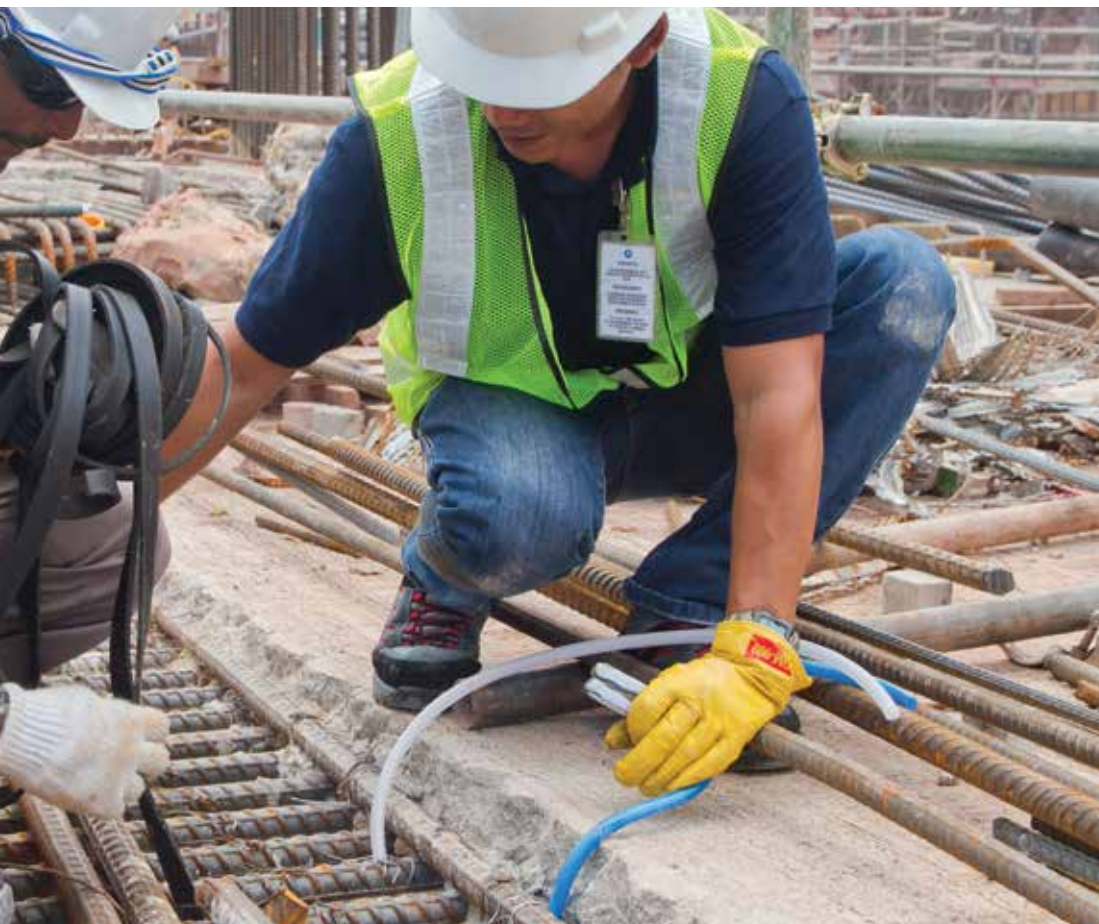
Swellseal is an expansive hydrophilic waterproofing strip for sealing horizontal and vertical construction joints, pipe penetrations and concrete to steel joints. They swell in contact with water to block water ingress. Easy to install, they are capable of reversible swelling in case of wet-dry cycles and have good impact and chemical resistance.

### Re-injecto™ LB Injection Hose

These are re-injectable injection hose for consecutive injection with Omnitek Inject micro fine cement or Gelacryl™ resins, to seal construction joints, pipe joints, joints between diaphragm walls and slabs. They are easy to install and handle, using the twinbox. Re-injection allows for future remedial work in case of leaks.

### Gelacryl™ Range

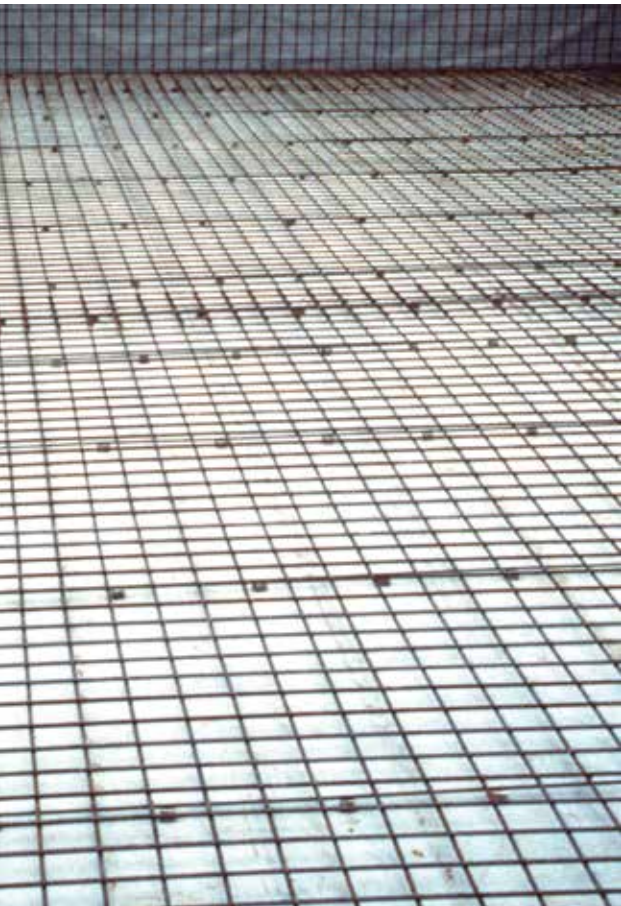
A range of poly-acrylate gel developed for injection into pores, cracks, capillaries, voids and honeycombed concrete. For preventative waterproofing, it can be injected into Re-injecto LB injection hoses. Gelacryl has excellent adhesion to concrete and good chemical resistance.



**“The 90%/1% principle: 90 percent of all water intrusion problems occur within 1 percent of the total building or structure exterior surface area.”**

MICHAEL T. KUBAL,  
CONSTRUCTION  
WATERPROOFING  
HANDBOOK, 2008





## Preprufe® Pre-Applied Waterproofing Membrane System

The world's first waterproofing system engineered for below slab and blind side applications, Preprufe has been installed and proven in some of the most challenging building projects worldwide. Composed of resilient HDPE layers, Preprufe is inherently waterproof, with excellent chemical resistance and low vapour permeability. GCP's patented

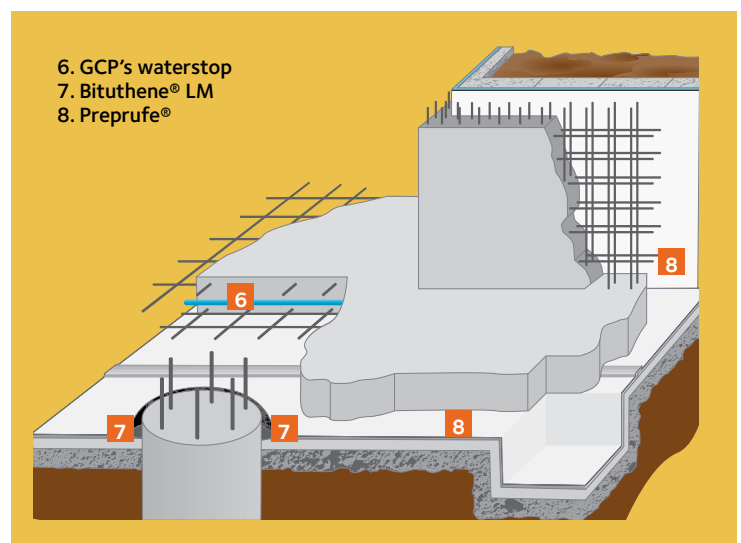
Advanced Bond Technology™ enables concrete to aggressively adhere to Preprufe. Preprufe's full and unique bond to concrete prevents any water tracking between the waterproofing and the structure. The Preprufe seal to concrete remains unaffected by ground settlement beneath slabs.

### ■ Advantages

- Continuous adhesive bond to poured concrete
- Zero water tracking for low cost leak remediation
- Fully sealed laps that also maintain continuous bond to concrete
- Water, vapour and gas proof
- Unaffected by ground settlement
- Lightweight and easy to install
- Backed by GCP's expertise
- Proven performance on major projects worldwide

### ■ Applications

- Basements
- Underground parking
- Foundations
- Tunnels
- Subway/ Mass Rapid Transit
- Libraries and archives
- Underpasses
- Retaining walls

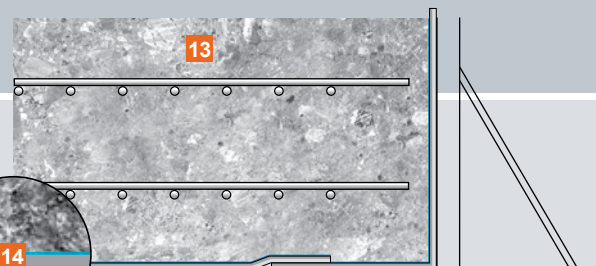
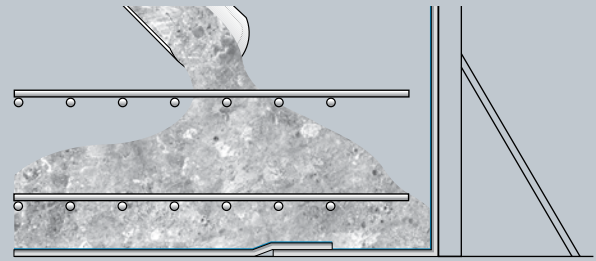
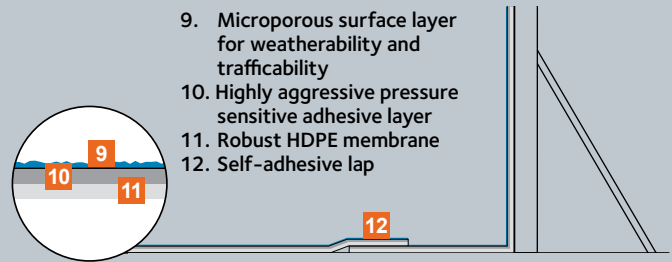




# Preprufe's Advanced Bond Technology™

## HOW IT WORKS

- Preprufe membrane is applied to prepared substrate or formwork before concreting.
- Steel rebar and concrete is placed directly on membrane with no need for additional protection.
- A permanent, continuous adhesive bond develops as concrete hardens.



- 13. Concrete slab
- 14. Mechanical and adhesive forces combine at concrete/membrane interface to provide a unique continuous bond and seal
- 15. Preprufe's intimate bond to concrete shown under a microscope.



## Bituthene® Self-Adhesive Waterproofing Membrane System

Virtually the industry standard for self-adhesive membranes since its introduction more than 40 years ago, over 300 million square metres of Bituthene have been installed in projects all over the world. Composed of cross-laminated HDPE film and self-adhesive rubber bitumen compound,

Bituthene membranes are formulated to be applied and perform under a variety of temperature conditions. Supplied in easy-to-apply rolls, Bituthene installs quickly and cleanly without the hazards associated with hot applied systems or the need for specialist equipment.

■ Product Features	■ Benefits
Self-adhesive	Full continuity at overlaps
Cold applied	No flame hazard with no heating equipment required
Flexible	Accommodates minor settlement and shrinkage movement
Cross-laminated film	Provides dimensional stability, high tear strength, puncture and impact resistance
Single layer	Simple, reliable, low labour cost with benefit of site programmed installation
Controlled thickness	Factory-made sheet ensures constant, non-variable site application
Chemically resistant	Provides effective external protection against aggressive soils and ground water

■ Application	Bituthene 3000	Bituthene 5000	Bituthene 6000	Bituthene 8000
Basement	●	●	●	●
Sub-structure	●	●	●	●
Flat deck	●		●	●
Roof assembly	●		●	●
Elevated or grade level podium	●	●	●	●
Plaza deck/ roof garden/ terrace	●		●	●
Bridge deck		●		
Gas proofing				●
Electrical insulation	●		●	
Over slab damp proof membrane	●		●	●
Sound insulation	●		●	●





### **Detailing Ancillaries**

Terminations, penetrations, and joints are among the 1 per cent of the building where leaks occur. At these points, it is essential to achieve an effective seal between the membrane and the penetration or joint. Bituthene LM, a trowel-applied liquid membrane specially developed by GCP Applied Technologies to seal such penetrations, has an excellent adhesion to most substrates and is elastomeric when cured. Bituthene LM, compatible with GCP waterproofing products, further reduces the risk of water penetration into structures.

### **Silcor® Spray-Applied Liquid Waterproofing System**

Silcor liquid-applied waterproofing is specially developed by GCP Applied Technologies, incorporating the latest technical advancements in polyurea, to optimise product application and durability. It is a two-component liquid system that cures rapidly to form a seamless, monolithic membrane fully bonded to the substrate. Based on advanced polyurea chemistry, Silcor is exceptionally durable with excellent wear and chemical resistance, offering your structure long lasting waterproofing protection.

### **Adprufe® Integral Waterproofing for Concrete**

Combining its expertise in structural waterproofing and concrete chemistry, GCP Applied Technologies has developed a system to integrally waterproof concrete. Its Adprufe System is an innovative admixture system that reduces permeability and drying shrinkage of concrete. It not only helps to meet the challenges of waterproofing complex building structures, but delivers scheduling flexibility and control over fast track construction programmes.

### **GCP Applied Technologies – Single Source Solution for Below Ground Waterproofing**

GCP's complete systems-based approach to waterproofing and its extensive range of fully compatible waterproofing products and accessories allow effective enveloping of foundations with a flexible, fully adhered waterproofing barrier. GCP is a single source solution for virtually any below ground application.

Furthermore, a range of De Neef products are available if there is water ingress at a later stage. Applied by specialist applicators, these injection resins are also often used during tunnel and underground constructions to prevent infiltrating water from hindering the normal progress of the works. The Hydro Active® series of high performance, phthalate-free, solvent-free injection grouts is designed to cut off gushing water leaks with a high flow rate and/or high pressure. The De Neef range also includes products for soil and rock stabilisation. For more information, please contact your local GCP's representative or visit [gcpat.com](http://gcpat.com).

## ALLNEX NEW ZEALAND LOCATIONS

### NEW ZEALAND

Allnex Customer Service

[cs.constructionnz@allnex.com](mailto:cs.constructionnz@allnex.com)

[www.allnexconstruction.com](http://www.allnexconstruction.com)

0508-882-288

### AUCKLAND (ALLNEX HEAD OFFICE)

09-583-6544

14 Industry Road

Penrose

Auckland

### HAMILTON

07-847-8658

18 Somerset Street

Frankton

Hamilton

### WELLINGTON

04-240-0305

19A Jamaica Drive

Grenada North

Wellington

### CHRISTCHURCH

03-366-6802

112 Carlyle Street

Sydenham

Christchurch

## GCP LOCATIONS

### WORLDWIDE HEADQUARTERS

GCP Applied Technologies Inc.

62 Whittemore Avenue

Cambridge, MA 02140

U.S.A.

Tel: +1 617 876 1400

### AUSTRALIA

General Enquiry:

Australia Toll Free Number 1800 334 444

[Anz.enq@gcpat.com](mailto:Anz.enq@gcpat.com)

National Specification Enquiry

[ANZ.specification@gcpat.com](mailto:ANZ.specification@gcpat.com)

[gcpat.com](http://gcpat.com) | For technical information: [anz.enq@gcpat.com](mailto:anz.enq@gcpat.com)

We hope the information here will be helpful. It is based on data and knowledge considered to be true and accurate, and is offered for consideration, investigation and verification by the user, but we do not warrant the results to be obtained. Please read all statements, recommendations, and suggestions in conjunction with our conditions of sale, which apply to all goods supplied by us. No statement, recommendation, or suggestion is intended for any use that would infringe any patent, copyright, or other third party right.

Gelacryl, Re-injecto, Hydro Active, Swellseal, De Neef, Adprufe, Bituthene, Preprufe and Silcor are trademarks, which may be registered in the United States and/or other countries, of GCP Applied Technologies, Inc. This trademark list has been compiled using available published information as of the publication date and may not accurately reflect current trademark ownership or status.

© Copyright 2017 GCP Applied Technologies, Inc. All rights reserved.

GCP Applied Technologies Inc., 62 Whittemore Avenue, Cambridge, MA 02140, USA

Printed in Singapore 300-BGBro-5 10/16

